



3 High Stable Cottages

Ulverston, LA12 0LE

Offers In The Region Of £245,000



2



1



2



D



3 High Stable Cottages

Ulverston, LA12 0LE

Offers In The Region Of £245,000



This beautifully presented and deceptively spacious three-level mews-style barn conversion is set within a charming rural hamlet, offering a peaceful lifestyle with a strong sense of community. Ideally suited as a holiday let, investment property, or first-time home, it boasts a superb balance of character and modern comfort. Surrounded by countryside, it's perfect for walking, cycling, and outdoor enjoyment. The interior features contemporary décor, modern fittings, double glazing, and efficient electric heating. Externally, a private patio area provides the perfect spot to relax and enjoy the sunshine.

Step through the characterful barn-style front door into a welcoming ground floor lounge, featuring an electric fire with surround, laminate flooring, and an open-plan staircase that adds to the sense of space and flow.

Up to the first floor, you'll find a charming kitchen and dining area. The kitchen is fitted with hand-painted base and wall units, a maple-effect work surface and matching splashbacks, an electric hob and oven, overhead extractor hood, and integrated microwave—offering both style and practicality. The adjoining dining space provides a cosy setting for meals and entertaining.

The second floor leads to two bedrooms and a family bathroom, completing the home's smart, vertical layout.

Externally, a private patio area offers a pleasant space to sit out and enjoy the peaceful rural surroundings.

Living Room

20.9 x 11.00 (6.10m.2.74m x 3.35m.0.00m)

Dining Room

42'3" x 36'5" (12.9 x 11.1)

Kitchen

7.11 x 8.1 (2.13m.3.35m x 2.44m.0.30m)

Bedroom One

36'1" x 25'11" (11.0 x 7.9)

Bedroom Two

11.1 x 7.0 (3.35m.0.30m x 2.13m.0.00m)

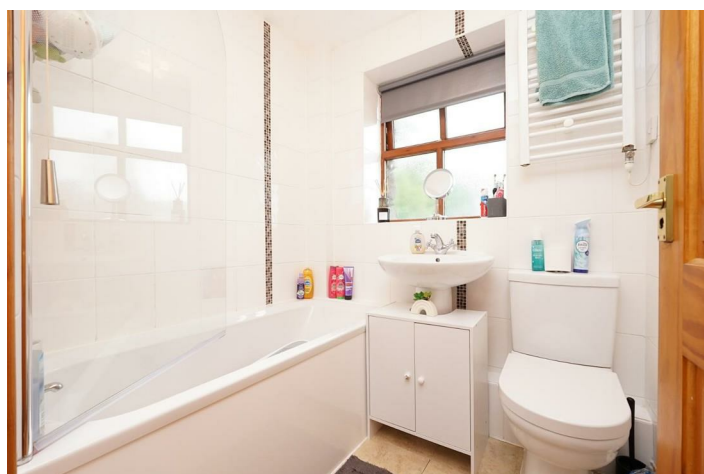
Bathroom

5.9 x 5.0 (1.52m.2.74m x 1.52m.0.00m)

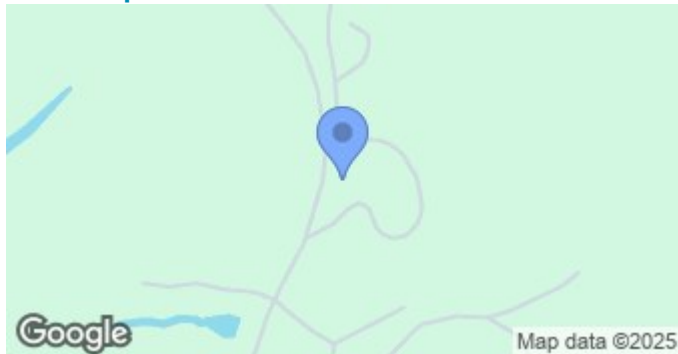


- Rural Location
- Well Presented
- Courtyard

- Open views to Countryside
- Two Bedrooms
- Council Tax Band B



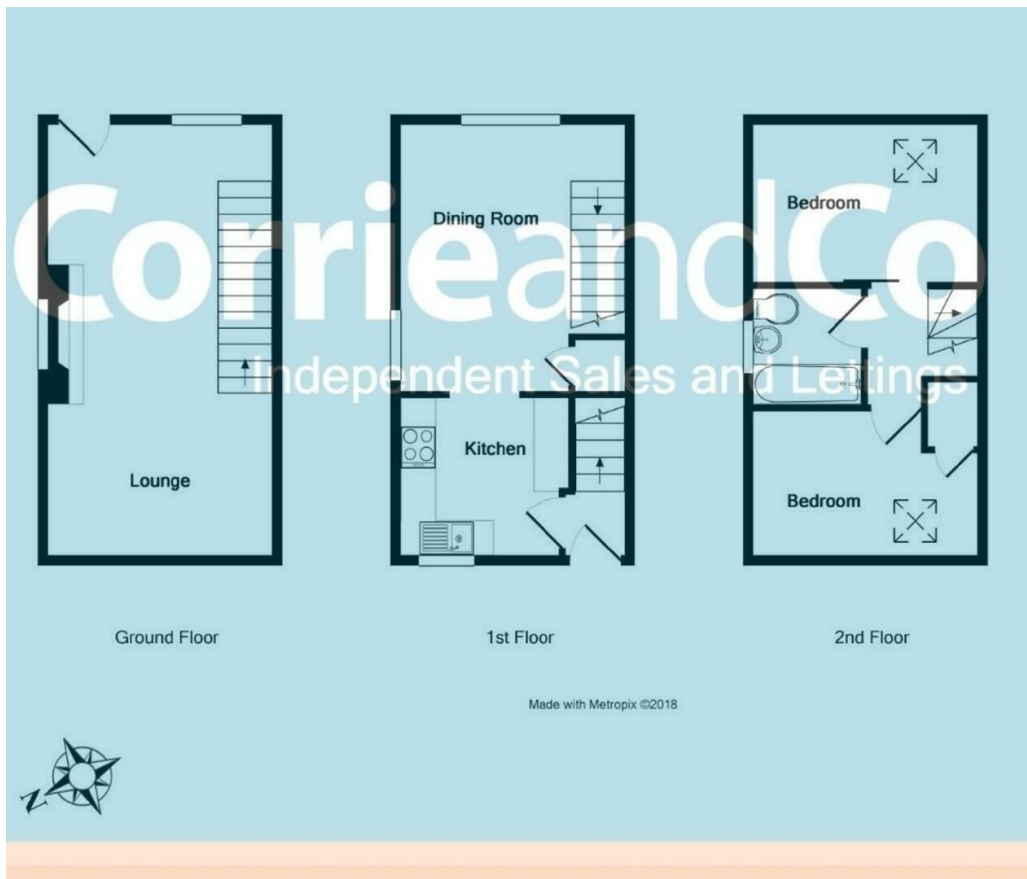
Road Map



Terrain Map



Floor Plan



We are local, family run business who are wholly independent which means we can recommend services to most suit your needs. Our aim is to provide quality advice and expertise at all times, so you can make an informed decision whether buying or selling.

Estate agents are required by law to check a buyers /sellers identity to prevent Money Laundering and fraud. You do have to produce documents to prove your identity or address and information on your source of funds. Checking this information is a legal requirement to help safeguard your transaction, and failing to provide ID could cause delays. Corrie and Co, outsource these checks to speed up the process. The company does charge for such checks, please ask for more information and guidance on associated costs.

To ensure your move is stress free, we can help with Mortgage advice. We work alongside local Solicitors, offering competitive conveyancing services. Ask for further information.

